

propel[®]

CONCRETE BATCHING SOLUTION

Customized Solution
for Your Concrete Needs

www.propelind.com

We Are **Propel**



About Us

True to the tagline, Propel Industries has been engineering excellence for a decade and it is raring to go stronger day by day. Now, we are extending our engineering acumen to the concrete industry by developing concrete batching equipment. The multiple batching solutions from us come with either twin shaft or planetary mixers. The Pro-Series of Propel Batching plant is sure to meet all your business requirements.

Opt for Propel batching plant for efficient mixing and excellent output

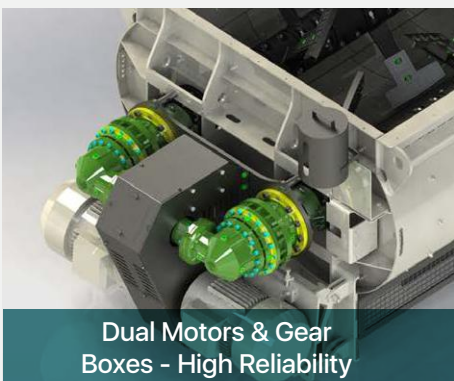


Vision

Invested in tomorrow; a pathbreaker that dares to travel uncommon roads.

Propel Pro Mix Twin Shaft Mixer

Propel Twin Shaft Mixer, developed in-house, is a robust and reliable mixer for a spectrum of concrete mixing applications. The three-dimensional mixing with high turbulence results in high-quality concrete output. The specially designed mixer gate ensures the fast and efficient discharge of concrete. The mixer is compact and easy to maintain. High-quality mixer tiles, mixing arms, and blades, as well as shaft seals, offer long-lasting results at low maintenance costs.

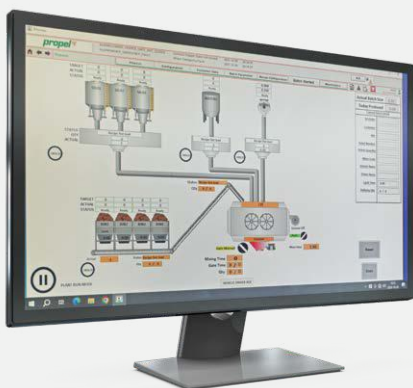


Propel Prosoft+ Control System

Prosoft+ is a straightforward, intuitive, and effective control system solution that boosts the performance of Propel Batching Plants. The brains of the propel batching plant are this PLC-based, fully automatic SCADA control system and software.



Auto Batch Setting in HMI



Specifications

- >>>>> Fully automatic PLC-based supervisory control and data acquisition (SCADA)
- ▶ HMI Screen for Autobatch, Manual Operation & Multiple Recipe Creation
- >>>>> Easy to understand and operate.
- ▶ Customized production and consumption reports.
- >>>>> Unlimited Mix Designs, Batch Report Formats, Customer Master and Vehicle Master
- ▶ ERP and weigh bridge integration are optional.
- >>>>> User-friendly settings and safety systems
- ▶ Batch Setting Changes During Operations: Swap, Batch Hold, Batch Adjust, Moisture Setting, Water Setting, Driver and Vehicle Changes, Batch Continue for Bulk Production.
- >>>>> Individual Fault Finding and Tripping - Quick Rectification
- ▶ Aggregate Batching System Feedback for plant reliability and reduction in down time.
- >>>>> graphic and visual for ease of understanding and operation.
- ▶ IEC 61439 standard control panel enabled with all industrial safety norms
- >>>>> Optional Features -
 - SMS & E-Mail Notification
 - Manual Inventory Inputs

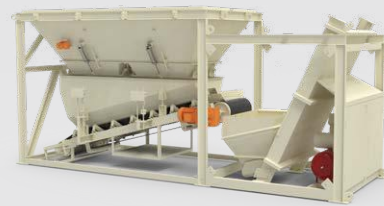
Compact Batching Solution

- Have a space crunch on your project site?
- Is the cost of land or lease for plant setup high in your city?
- Have you a plan for moving the plant frequently?

Opt for the Propel Compact Batching Solution. This Compartment Bin, Skip Bucket, and Twin-Shaft Mixer Plant A compact design will solve all your challenges.



Easily transportable in a single trailer.



More Productivity as skip operation and aggregate weighing done simultaneously



Modular Concept



Simple PCC Foundation.



Easy and fast setup as plant arrives Pre - assembled



Twin shaft Mixer can handle Higher Aggregate Size Produces high quality Concrete with less wear & tear.



Low Ramp height for easy loading.



Dual rope skip system with falling prevention.

Product Varients



Our Services



Accessories

- Screw Conveyors for Cement/Fly ash/GGBS/ micro silica
- Silos for Cement/Fly ash/GGBS/ micro silica
- Additional Ad mixer Dosing System
- Cement Feeding System
- Primary Feeding Conveyor
- Skid for Plant & Silo
- Chiller Plant / Ice Plant
- Weigh Bridge
- Control Cabin Water Pump

Technical Data

		PRO 30 TSM/TSI	PRO 45 TCI	PRO 60 TCI	PRO 70 TCI	PRO 90 TCI	PRO 120 TCI
Basic Information							
Output		30	45	60	70	90	120
Space required	m	12x3	30x4 / 25x20	30x4 / 25x20	30x4 / 25x20	30x4 / 25x20	30x4 / 25x20
Concrete Discharge Height	m	4	4	4	4	4	4
Mixer System							
Mixer Type		Twin Shaft / Planetary		Twin Shaft			
Mix Volume (Wet)	m ³	0.5	0.75	1	1.25	2	3
Maximum aggregate Size	mm	40		60		80	
Aggregate Management							
Bin type		Compartment / Inline		Inline			
Number of bins		4	4	4*			
Total Capacity	m ³	20	30	40#		80#	100#
Ramp Height	m						
Aggregate Weighing		Belt conveyor					
Aggregate transfer to Mixer		Skip Bucket		Inclined belt conveyor			
Max. Weighing Capacity							
Aggregate	kg	1200	1800	2500	3150	5000	7500
Cement / Filler	kg	350	525	700	700	1350	1800
Water	kg	150	250	400	400	680	900
Additive	kg	12	12	12	12	2x12	2x12
Air Compressor							
	kW(hp)	3.7 (5)	3.7 (5)	5.5 (7.5)	5.5 (7.5)	7.5 (10)	7.5 (10)
Max. Pressure	Bar	12	12	9	9	9	9
Space required	Lit	220	220	220	220	400	400
Control System							
Fully automatic SCADA based PLC control panel with Computer and printer							
Electrical Load							
Peak operating load\$	kW (hp)	43 (58)	60 (80)	85 (114)	97 (130)	144 (193)	199 (267)
Total connected load	kW (hp)	56 (75)	6 (82)	87 (117)	99 (133)	146 (196)	202 (271)
Genset suggestion^	kVa	70	80	110	125	200	250

Note :

Screw conveyors of various sizes for Cement / Fly Ash / GGBS / Micro silica available

*standard plant foot print without silo

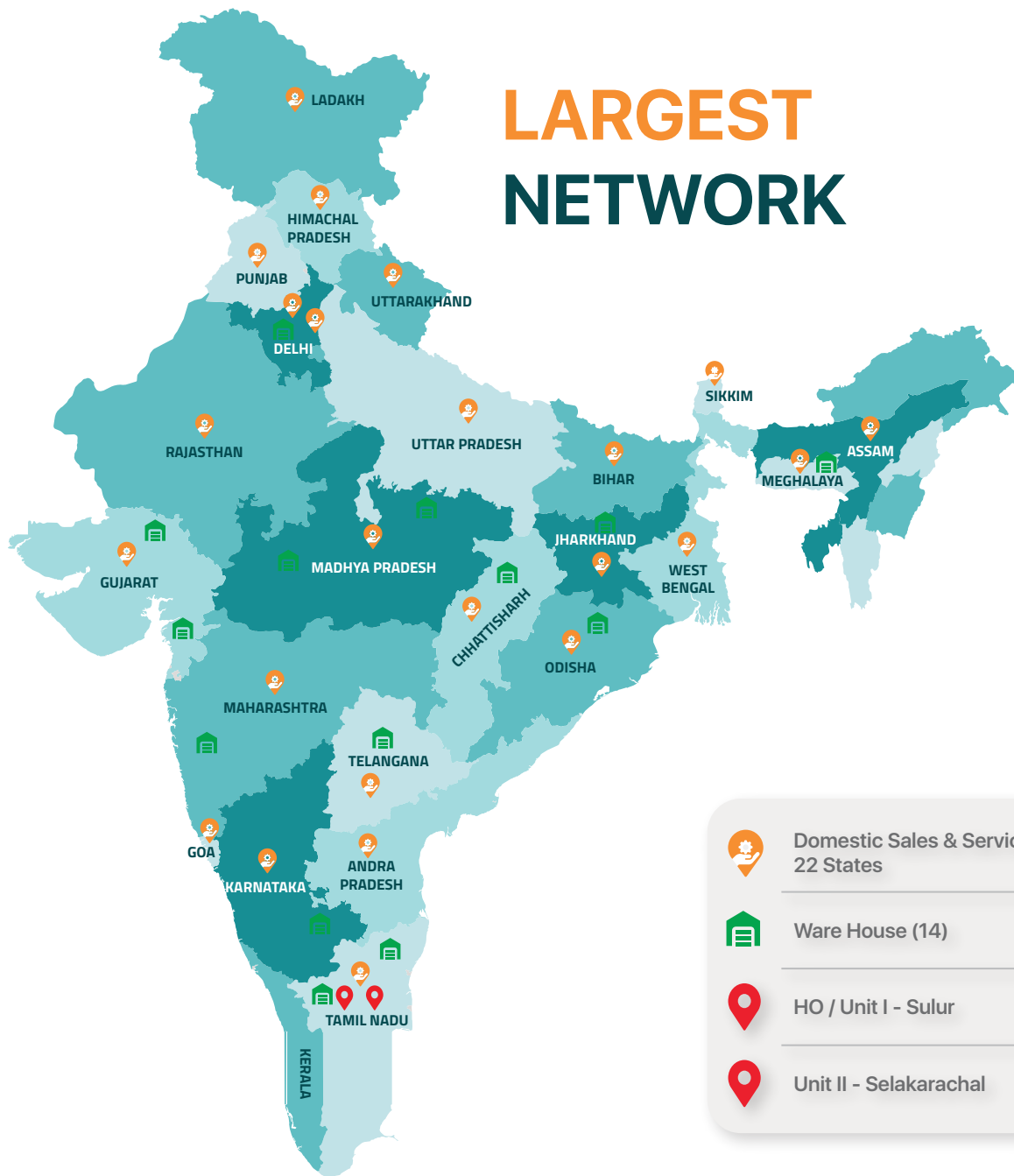
*can be increased upto 6





can be increased from 60 to 150 m³ & calculated for standard BHL

\$with 1 standard screw conveyor

^Only for plant operation (Blower and Return filters not considered).may vary due to DG condition,efficiency etc.

LARGEST NETWORK



-  Domestic Sales & Services
22 States
-  Ware House (14)
-  HO / Unit I - Suler
-  Unit II - Selakarachal



Certified In
India Crushing
Industry



Countries
World Wide



Product
Range



Plants &
Installations



Happy
Customers



Approved
R&D Centre

PROPEL INDUSTRIES PRIVATE LIMITED

Registered Office:

SF NO : 663, Ravathur Main Road,
Ravathur Post, Coimbatore,
Tamil Nadu - 641 103

Corporate Office:

SF NO : 38/1B, Trichy Main Road,
Kanagayampalayam, Suler,
Coimbatore - 641 401. India.

Communication :

+91 96009 43266 / 99940 60002
Email : marketing@opelequip.com
Web : www.propelind.com